

## Combi steamer Silversteam2 P-5230D



### Description

More efficiency and time savings with the combi-steamer Silversteam2 P 5 x 2/3 GN thanks to even more power. Thanks to the high performance and rack control function, full cooking chambers are no problem at all. The reduced cooking times, faster heating up and easy handling speak for themselves.

### Features

- Material: CNS 18/10
- Material cooking chamber: CNS 18/10
- Power load: 4,8 kW | 400 V | 50 Hz
- Important information: From a water hardness of 5° dH upwards, we urgently recommend fitting a suitable water softener and a water pressure of maximum 3 bar
- Format drawers: 2/3 GN
- Equipment connection: 3 NAC
- Type of drawers: Crosswise
- Number of drawers: 5
- Distance between trays: 74 mm



- ▶ Combi Steamer Silversteam P
- ✓ High power
- ✓ Up to 5 x 2/3 GN



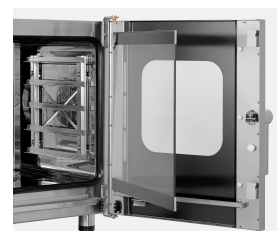
- ▶ Rack control
- ✓ To enable the selection of a program for each shelf

- ▶ Faster heating and reheating times
- ▶ Up to 30% reduction in cooking times
- ▶ Ideal for oven interiors used to full capacity



- ▶ Electronic control with 600 programs (300 preinstalled, 300 programmable); up to 9 cooking phases per program

- ▶ Cooldown during cooking phase



- ▶ Double door glazing, inner door can be opened easily for cleaning

▶ Continue on the next page

## Combi steamer Silversteam2 P-5230D

- Functions:
  - Delta-T cooking
  - Steam production by means of direct injection
  - Combi-steaming
  - Circulating air
  - Steam
  - Low temperature cooking
  - Reversing motor direction (fan wheels)
  - Cooldown during cooking phase
  - Manual steaming
- Cooking mode:
  - Recipe tuner
  - One-touch recipe selection
  - Manual
- Rack control:
  - Yes
- With cleaning system:
  - No
- Number of cooking programs:
  - 300 configurable programs
  - 300 pre-installed programs
- Number of cooking phases:
  - 9
- Temperature range:
  - 50 °C to 300 °C
- Temperature control:
  - In 1 °C steps
- Number of fans:
  - 1
- Fan speed:
  - 3 levels
- Time adjustment:
  - 0 to 5999 minutes
- Continuous operation:
  - Yes
- Core temperature sensor connection:
  - Front, bottom
- USB connection:
  - Front, bottom
- Vapour extractor:
  - Yes
- Water connection:
  - 3/4"
- Interior lighting:
  - Yes
- LED display:
  - Temperature
  - Program
  - Time
  - Steaming
  - Core temperature
  - Cooking phases
  - Delta-T cooking
  - Fan speed
  - Touch
- Control unit:
  -
- Control lamp:
  -
- Series:
  - Silversteam2
- Operating mode:
  - Electro
- Properties:
  - Ideal for cooking spaces used to full capacity
  - Rounded cooking chamber
  - Double-winged door pane
  - Faster heating and reheating times
  - LED lighting in door
  - Up to 30 % reduction in cooking times
  - Bearing rails can be detached
- Including:
  - 1 water supply hose
  - 1 tray 2/3 GN
  - 1 grid 2/3 GN
  -
- Available on request:
  -
- Size:
  - W 635 x D 775 x H 680 mm
- Weight:
  - 60 kg





## Combi steamer Silversteam2 P-5230D

### Add on Products

#### Base unit Silversteam 230

CNS



- Material: Chrome-nickel steel
- Designed for: 2/3 GN combi-steamers Silversteam2 series  
2/3 GN combi-steamers Silversteam series
- Important information: -
- Colour: Silver
- Base shelf: Yes
- Height-adjustable feet: No

Code-No. 115075  
GTIN 4015613610641

#### Core temperature sensor set SST2-D1P



- Designed for: Digital electric combi-steamers from the Silversteam2 series
- Material temperature sensor: Chrome-nickel steel
- Important information: -
- Puncture depth: 80 mm
- Diameter temperature sensor: 3 mm
- Number of measuring points: 1

Code-No. 116109  
GTIN 4015613866697

#### Core temperature sensor set SST2-D4P



- Designed for: Digital electric combi-steamers from the Silversteam2 series
- Important information: -
- Material temperature sensor: Chrome-nickel steel
- Puncture depth: 90 mm
- Diameter temperature sensor: 4 mm
- Number of measuring points: 4

Code-No. 116113  
GTIN 4015613877747

#### Hand shower f. combi steamer



- Length hose: 2 m
- Properties: Shutoff valve for fixed connection to water supply 1/2"
- Including: 1 holder
- Important information: -
- Water connection: 1/2"

Code-No. 116005  
GTIN 4015613587189

## Combi steamer Silversteam2 P-5230D

### Add on Products

#### Pump set f. combi steamer



- Material: Plastic  
Metal
- Important information: -

Code-No. 116011  
GTIN 4015613595146

#### Smoker-Box 1160



- Material: Stainless steel
- Model: With heating coil
- Designed for: Combined steamer
- Important information: Maximum smoking temperature: 200 °C
- Comprising: Mains adapter  
Smoker-Box
- Volume: 1,16 litre(s)

Code-No. 117712  
GTIN 4015613779195

#### Pressure regulator



- Material: Brass  
Chrome-plated
- Important information: -
- Water pressure: 1 - 6 bar (preset to 3 bar)
- Connection: 3/4"
- Operating temperature max.: 65 °C
- Incoming pressure max.: 16 bar

Code-No. 533051  
GTIN 4015613468617

#### GN-container, 2/3 GN,D20, Basic Line



- Stackable: Yes
- Design: No perforation
- Reinforced edge: No
- Surface: Silk matt
- Depth container: 20 mm
- Gastronorm: 2/3 GN
- Norm: EN 631

Code-No. 723020  
GTIN 4015613695624

## Combi steamer Silversteam2 P-5230D

### Add on Products

#### GN-container, 2/3GN,D65, Basic Line

CNS



- Content: 5,5 litre(s)
- Stackable: Yes
- Design: No perforation
- Reinforced edge: No
- Surface: Silk matt
- Depth container: 65 mm
- Gastronorm: 2/3 GN

Code-No. 723065  
GTIN 4015613695648

#### GN-container, 2/3GN,D100, Basic Line

CNS



- Content: 9 litre(s)
- Stackable: Yes
- Design: No perforation
- Reinforced edge: No
- Surface: Silk matt
- Depth container: 100 mm
- Gastronorm: 2/3 GN

Code-No. 723100  
GTIN 4015613695655

#### GN container, 2/3, D65, perforated

CNS  
18/10



- Content: 5,5 litre(s)
- Stackable: Yes
- Design: With perforation (holes)
- Reinforced edge: No
- Properties: -
- Surface: High-gloss
- Depth container: 65 mm

Code-No. A103065  
GTIN 4015613278940

#### GN container, 2/3, D65

CNS  
18/10



- Content: 5,5 litre(s)
- Stackable: Yes
- Design: No perforation
- Reinforced edge: No
- Properties: -
- Surface: High-gloss
- Depth container: 65 mm

Code-No. A125065  
GTIN 4015613271217

## Combi steamer Silversteam2 P-5230D

### Add on Products

#### GN container, 2/3, D100

CNS  
18/10

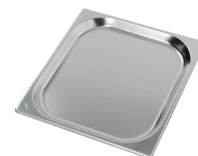


- Content: 9 litre(s)
- Stackable: Yes
- Design: No perforation
- Reinforced edge: No
- Properties: -
- Surface: High-gloss
- Depth container: 100 mm

Code-No. A125100  
GTIN 4015613271224

#### GN tray 2/3

CNS  
18/10



- Gastronorm: 2/3 GN
- Important information: -
- Stackable: Yes
- Design: No perforation
- Reinforced edge: Yes
- Properties: -
- Depth container: 20 mm

Code-No. A101195  
GTIN 4015613271781

#### Perforated tray 2/3-AL



- Diameter perforation: 3 mm
- Gastronorm: 2/3 GN
- Edge: 4 sides, cover
- Silicone coating: No
- Material thickness: 1,5 mm
- Perforation: Yes
- Temperature resistant to: 260 °C

Code-No. 100417  
GTIN 4015613734729

#### Perforated tray 2/3-SI



- Diameter perforation: 3 mm
- Gastronorm: 2/3 GN
- Edge: 4 sides, cover
- Silicone coating: Yes
- Material thickness: 1,5 mm
- Perforation: Yes
- Temperature resistant to: 260 °C

Code-No. 100425  
GTIN 4015613734736

## Combi steamer Silversteam2 P-5230D

### Add on Products

#### BBQ Gloves 425



- Material: Aramid  
Silicone print

Code-No. A500514  
GTIN 4015613822433

#### Oven gloves 370



- Properties: With flame protection  
With hanger  
Fabric density: 640 g/m<sup>2</sup>
- Material: Cotton 100 % (exterior)
- Colour: Black
- Important information: Do not wash to maintain flame protection
- Can be washed: No

Code-No. A500511  
GTIN 4015613735474

#### Power cleaner F1L



- Order quantity unit: 1 box (6 bottles)
- Content: 6 x 1 litre
- Model: Liquid
- HACCP compliant: Yes
- Chlorine-free: Yes
- Phosphate-free: Yes

Code-No. 173278  
GTIN 4015613773346

#### Intensive power cleaner F1L



- Order quantity unit: 1 box (6 bottles)
- Content: 6 x 1 litre
- Model: Liquid
- HACCP compliant: Yes
- Chlorine-free: Yes
- Phosphate-free: Yes

Code-No. 173280  
GTIN 4015613773353